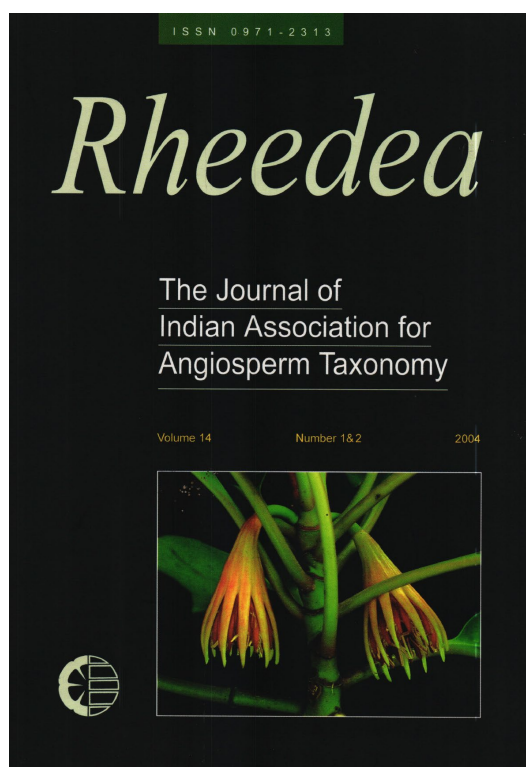




A New Species of *Eriocaulon* L. (Eriocaulaceae) from Karnataka, India

Gaikwad S.P., Sardesai M.M., Yadav U.S., & S.R. Yadav



How to cite:

Gaikwad S.P., Sardesai M.M., Yadav U.S., & S.R. Yadav 2004. A New Species of *Eriocaulon* L. (Eriocaulaceae) from Karnataka, India. *Rheedeia* 14(1&2): 63–65.

<https://dx.doi.org/10.22244/rheedeia.2004.14.1&2.08>

Received: 22.03.2004

Revised and accepted: 10.9.2004

Published in print: 31.12.2004

Published Online: 01.01.2022



A New Species of *Eriocaulon* L. (Eriocaulaceae) from Karnataka, India

S. P. Gaikwad, M. M. Sardesai, U. S. Yadav¹ and S. R. Yadav²

Department of Botany, Shivaji University, Kolhapur 416 004, Maharashtra, India.

¹Department of Botany, Willingdon College, Sangli 416 415, Maharashtra, India.

²Department of Botany, University of Delhi, Delhi 110 007, India.

Abstract

A new species of *Eriocaulon*, *E. karnatakense* Gaikwad et al., is described from Kemmangundi hills of Chikmagalur district, Karnataka. It differs from the allied *E. sharmae* Ansari and N.P. Balakr. in having a root stock, linear-lanceolate and acute leaves, ovate-acuminate black involucre bracts with appendages only from transverse radial walls.

Keywords: *Eriocaulon karnatakense*, New species, Chikmagalur, Karnataka

Introduction

The family Eriocaulaceae is represented by 13 genera and about 1200 species mainly distributed in the tropics and the subtropics of the World (Cronquist, 1981). The genus *Eriocaulon* L. consists of about 400 species (Willis, 1988) distributed in the tropical and subtropical regions of America, Africa, Asia, Australia and Europe as far west as Ireland, with the greatest concentration in South America (Ansari & Balakrishnan, 1994). In India, the genus is represented by 68 species, of which 57 species occur in Peninsular India (Ansari & Balakrishnan, 1994; Yadav et al., 1998; Gaikwad & Yadav, 2002 and Gaikwad et al., 2002).

We have collected, as part of our study on Eriocaulaceae of the Western Ghats, 45 species of *Eriocaulon* L. from Maharashtra, Goa and Karnataka. Two species collected from Maharashtra turned out to be new. They, *Eriocaulon ratnagiricus* Yadav et al. and *Eriocaulon kolhapurens* Gaikwad et al. have already been described (Yadav et al., 1998; Gaikwad et al., 2002). The third species collected from Karnataka is described and illustrated here.

Eriocaulon karnatakense Gaikwad, Sardesai, Yadav et Yadav sp. nov. **Fig. 1.**

Eriocaulon sharmae similis, rhizomate, foliis linearilanceolatis acutis, bracteis involucrelibus acuminatis nigris, testae appendiculis setiformibus e parietibus transverse radialis differt.

Type: INDIA, **Karnataka**, Kemmangundi, about 54 km from Chikmagalur at 1500 m in the crevices of rocks, 15 October 2000. S.P. Gaikwad 3 (Holotype, CAL; Isotype BSI, K, SUK)

Acaulescent herbs; rootstock upto 6 cm long. **Leaves** rosulate, linear, lanceolate, acute, upto 6 x 0.4 cm, glabrous. **Peduncle** 1 or 2, erect, upto 40 cm in height, glabrous; sheaths upto 10 cm long, glabrous; limb lanceolate acute, entire. **Heads** globose, 0.7 cm across, grey; receptacle pilose; involucre bracts obovate, acuminate, dentate, c. 3.1 x 1.4 mm with a few hairs on dorsal surface, black; floral bracts oblanceolate, acute, c. 3 x 1 mm, hairy on dorsal surface towards apex, grey. **Male flowers** pedicellate, sepals obovate, connate at base into spathe, c. 2.6 x 1.8 mm; lobes oblanceolate, obtuse, grey, hairy at apex; petals unequal; larger petal oblanceolate, obtuse, upto 2.5 mm long, densely hairy with prominent black gland, straw coloured; smaller two petals oblanceolate, obtuse, c. 0.9 mm long with black glands, straw coloured; anther 6, black. **Female flowers** pedicellate; sepals 3, free, linear-oblanceolate, concave, obtuse, c. 2.3 mm long with a few hairs at apex, grey; petals 3, free, linear-oblanceolate, spatulate, c. 1.8 mm long, hairy towards apex, straw coloured; ovary stipitate; style 3-fid. **Seeds** oblong, ellipsoid, c. 0.40 x 0.22 mm; seed coat cells transversely elongated and aligned in

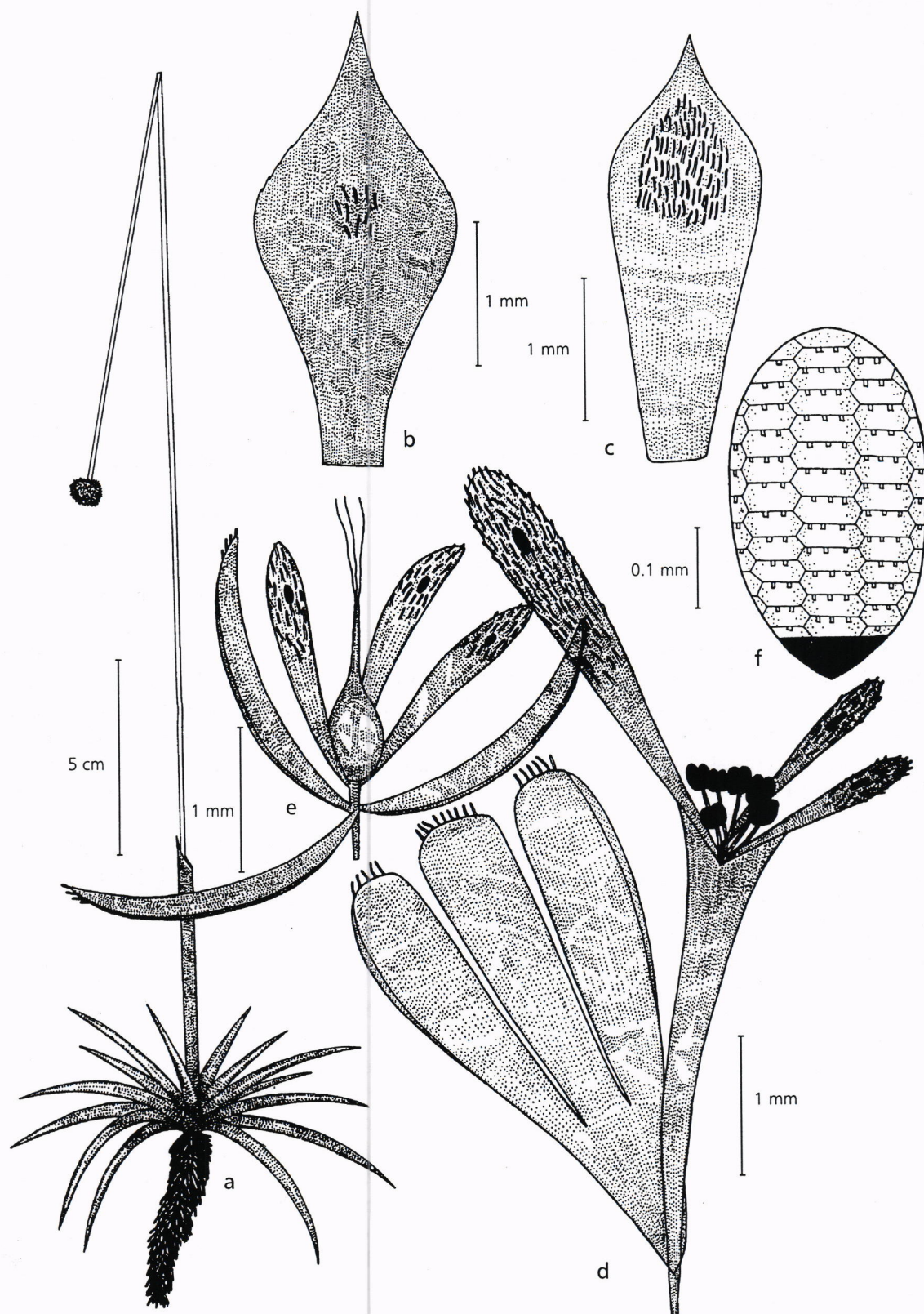


Figure 1. *Eriocaulon karnatakense* Gaikwad et al. – a. Habit; b. Involucral bract; c. Floral bract; d. Male flower; e. Female flower; f. Seed.

Table 1: Morphological differences of *Eriocaulon sharmae* Ansari et N. P. Balakr. and *Eriocaulon karnatakense* Gaikwad et al.

Sl No.	<i>E. sharmae</i> Ansari & Balakr.	<i>E. karnatakense</i> Gaikwad et al.
1.	Root stock absent.	Root stock present, upto 6 x 0.3 cm long.
2.	Leaves oblong obtuse or subacute, upto 25 x 2.5 cm.	Leaves linear- lanceolate, acute, upto 10 x 0.7 cm.
3.	Involucral bracts obovate, acute or acuminate, 3x2 mm, straw coloured.	Involucral bracts obovate, acuminate, 3.1 x 1.3 mm, black.
4.	Seed coat cells elongated and aligned in vertical rows; appendages from transverse radial wall and one or nil from vertical radial wall.	Seed coat cells elongated and aligned in vertical rows; appendages only from transverse radial walls.

vertical rows; appendages setiform from transverse radial wall.

Etymology: The new species is named after the State of Karnataka.

Flowering & Fruiting: September-November.

Habitat: *Eriocaulon karnatakense* is restricted to the hills at Kemmangundi in Chikmagalur district of Karnataka. It is rare and sparsely distributed.

Note: *Eriocaulon karnatakense* resembles *Eriocaulon sharmae* Ansari et Balakr. but differs in having a rootstock, linear-lanceolate, acute leaves, obovate-acuminate black involucral bracts and setiform seedcoat appendages emerging from transverse radial wall.

Acknowledgements

Authors thank the authorities of Shivaji University, Kolhapur for providing research facilities, J. F. Veldkamp, National Herbarium, Leiden, The Netherlands for Latin diagnosis. The first two authors acknowledge the Department of Science and Technology (DST), Government of India for financial assistance under fast track proposals for Young Scientist Scheme 2000.

Literature Cited

- Ansari, R. & N.P. Balakrishnan 1994. *The family Eriocaulaceae in India*. Bishen Singh Mahendra Pal Singh, Dehra Dun, India.
- Cronquist, A. 1981. *An Integrated System of Classification of Flowering Plants*. Columbia University Press, New York.
- Gaikwad, S.P. & S.R. Yadav 2002. Eriocaulaceae in Maharashtra. In: Pullaiah, T. (Ed.), *Biodiversity of India*. Regency Publishers, New Delhi. 1: 256-341.
- Gaikwad, S.P., Sardesai, M.M. & M.M. Yadav 2002. A new species of *Eriocaulon* L. (Eriocaulaceae) from Maharashtra (India). *Rheedea* 12(2): 133-136.
- Willis, J.C. 1988. *A Dictionary of the Flowering Plants and Ferns*. Press Syndicate of the University of Cambridge, USA.
- Yadav, S.R., Gaikwad, S.P. & M.M. Sardesai 1998. A New species of *Eriocaulon* L. (Eriocaulaceae) from India. *Rheedea* 8(2): 145-147.

Received 22.3.2004

Revised and accepted 10.9.2004